

Smart operation with IP control

An Integrated Pan-tilt HD/SD Camera for a Wide Range of Shooting Conditions

HD Integrated Camera

For indoor use

AW-HE120WP/WE/KP/KE

Full HD 3MOS	HD/SD	20x optical zoom	10x digital zoom
IP/Serial control	DRS	Turn-lock mounting mechanism	60Hz/50Hz switchable

HD	1080/59.94p (HDMI only), 59.94i, 50p (HDMI only), 50i, 720/59.94p, 50p,
SD	576/50p (HDMI only), 50i, 480/59.94p (HDMI only), 59.94i



AW-HE120WP/WE (White Model)
*Suspended (Hanging) style

AW-HE120KP/KE (Black Model)
*Stand-alone (Desktop) style



Option



Wireless remote control
AW-RM50G

("AA", "R6" or "LR6"
battery x 2 are not included.)



Direct Ceiling Mount Bracket
WV-Q105

System example

HD/SD Camera System

Ideal for shooting in large places such as concert halls and government chambers

Key Points

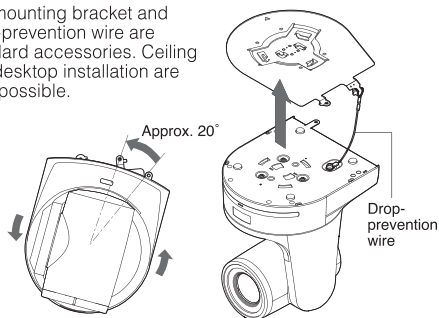
- Up to a hundred AW-HE120WP/WE/KP/KE units can be controlled by AW-RP50N/E via IP connections when using Ethernet hubs.

[Key Products]

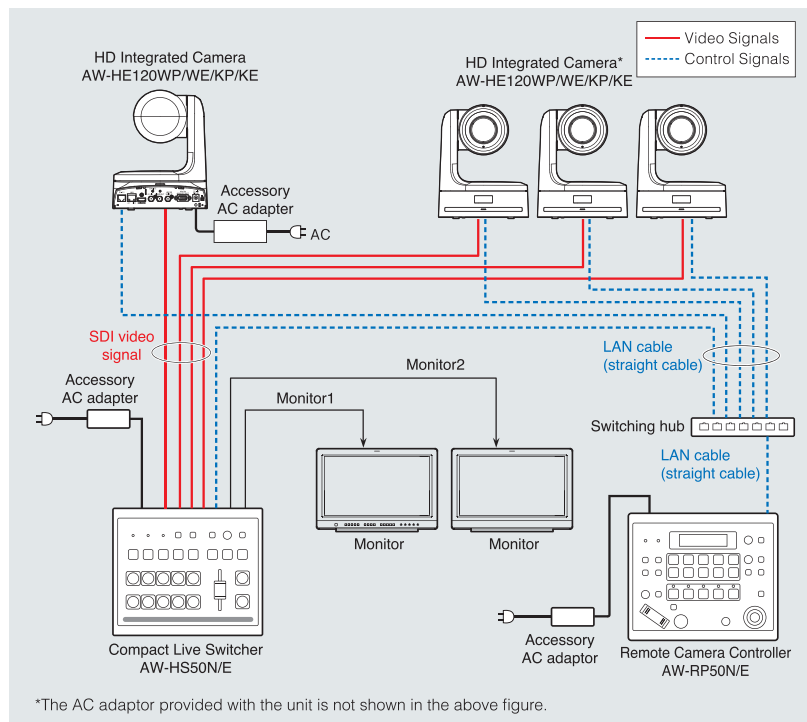
AW-HE120WP/WE/KP/KE AW-HS50N/E AW-RP50N/E

Optimal for both hanging and desktop installation.

The mounting bracket and drop-prevention wire are standard accessories. Ceiling and desktop installation are both possible.



* Wiring, mounting, and removal must be done by a qualified technician. To ensure safety, consult with the dealer from whom you purchased the system.



*The AC adaptor provided with the unit is not shown in the above figure.

Integrated Pan-tilt camera with a compact body and simple system configuration

Both SDI and HDMI are supported, and IP connection enables flexible system configuration, easy connection and settings. It can also be connected to current camera controllers. Both size and weight have been reduced by approximately 60 % compared to our previous model (the AW-HE100) to achieve a lightweight, compact body. With its sleek design and color variation, it blends with atmospheres in a variety of situations.



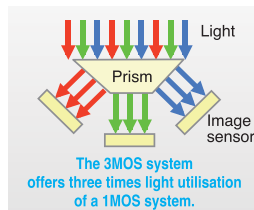
Compared with the previous AW-HE100 model

Shooting high-quality images with 1/3 type Full-HD "U.L.T." 3MOS image sensors

•Ultra Luminance Technology

High resolution and high image quality are produced by the newly developed 1/3 type 2.2 mega pixels "U.L.T." 3MOS sensors and digital signal processor (DSP).

The 3MOS System uses three MOS sensors to process the three primary colors (R, G, B) of light. (MOS = Metal Oxide Semiconductor)



A 20x optical zoom lens covers wide-angle to ultra telephoto shots.

In addition to a wide-angle design that features 32.13 mm (35 mm equivalent) at the wide end, the AW-HE120 has a 20x optical zoom lens and a 10x digital zoom power. This lets you shoot a wide variety of sharp and crisp images from wide angle to close up.

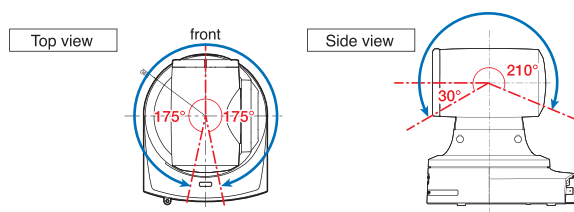


From wide angle to telescopic shots - the cameras deliver clear and crisp images for a wide range of applications. (Images are simulated.)

A wide range pan-tilt, high-speed control, and silent design apply for versatile operations.

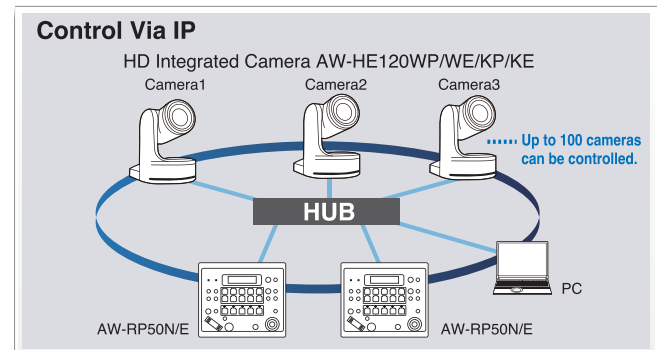
More smooth and natural movement is achieved for the pan-tilt operation. The pan-tilt head also allows a wide range* shooting, with a pan range of $\pm 175^\circ$ and a tilt range of -30° to 210° . The newly developed pan tilt drive provides high-speed operation at maximum 60 °/s, excellent response from remote control operation, and highly precise stop control. These features combine to accurately capture fast-action sports scenes with comfortable remote shooting. The noise level during operation is also very low, at NC35 or less, which is ideal for shooting in concert halls.

* Depending on the position of the pan and tilt, its own unit may be reflected in the image.



IP control provides easy connection and settings for comfortable camera control

Up to 100 x AW-HE120WP/WE/KP/KE units can be controlled from the AW-RP50N/E or a PC through a switching hub using the IP connection. IP connection also allows one AW-HE120WP/WE/KP/KE to be controlled simultaneously from up to five AW-RP50N/E units.



Dynamic Range Stretch (DRS) automatically optimizes images that have a wide contrast range.

A gamma curve and knee slope are estimated to match the contrast of each pixel in real time. When dark, bright, and intermediate areas are all contained in the same scene, this function produces excellent gradation for each area and minimizes blocked shadows and blown highlights. The images of results are enhanced by a visually wider dynamic range.



DRS OFF
With the iris expanded, this blown highlight appears on the blackboard



DRS OFF
With the iris contracted, a blocked shadow appears on the figure



DRS ON
Both highlights and shadows are clearly visible

(Images are simulated.)

Other features

●Setting camera menus with a PC

Camera menus can be set up via a web browser by connecting the AW-HE120WP/WE/KP/KE to a PC.

●Wireless remote controller for easy operation (option)

Up to 4 cameras can be controlled by an optional wireless remote controller (AW-RM50G). The basic operations and menu settings can be done by using the wireless remote controller.

●Simple connection and installation enable a flexible camera layout

IP control, a lightweight body, and the turn-lock mounting mechanism enable easy connection and mounting by a single person (indoor mounting only).

●Compact design for energy-saving

The compact, lightweight body realizes low power consumption and low cost operation of multiple cameras.

●Allows up to 100 pre-set memories per camera

●Four-position (Through, 1/4, 1/16, 1/64) ND filter

Specifications

		AW-HE120WP/WE/KP/KE								
Power Requirements		DC 12 V (AC adaptor supplied)		Camera	Scene File		Scene1, Scene2, Scene3,Scene4			
Power Consumption		1.75 A			Output Format	HD		1080/59.94p ² , 1080/59.94i, 1080/50p ² ,		
Operating Temperature		0°C to 40°C (32°F to 104°F)				SD		1080/50i, 720/59.94p, 720/50p		
Allowable Humidity Range		35 % to 90 % (no condensation)						576/50p ² , 576/50i, 480/59.94p ² , 480/59.94i		
Storage Temperature		-20°C to 50°C (-4°F to 122°F)		Synchronization System		Internal/External synchronization (BBS/Tri-level sync)				
Weight		Approx.3.0 kg (Approx 6.61 lbs) (Including mount bracket)		Input Connector		DC 12 V IN, G/L IN (BNC×1) ³ *BBS (Black Burst Sync), tri-level sync supported				
Dimensions (W × H × D)		180 mm × 228 mm × 220 mm (7-3/32 inches × 8-31/32 inches × 8-21/32 inches) (excluding protrusions, cable cover, direct ceiling mount bracket)		Output Connector	HDMI		HDMI×1			
Image Sensors		1/3 type Full-HD 3MOS			HD/SD SDI OUT		BNC×1 Compliant with the SMPTE292M/SMPTE259M standards/75 Ω			
Lens		Motorized 20x zoom, F1.6 to F3.4 (f=4.5 mm to 90 mm; 35 mm equivalent: 32.13 mm to 642.5 mm)			VIDEO OUT		BNC×1 NTSC/PAL 1.0 V[p-p]/75 Ω			
					HD/SD ANALOG OUT		Y/Pb/Pr or R/G/B D-sub 15 pin x 1			
Focus		Switching between auto and manual		Input/Output Connector		LAN		LAN connector for IP control (RJ-45)		
Focus distance		Entire zooming range: 800 mm, Wide end: 400 mm				RS-422		CONTROL IN RS422A (RJ-45)		
Color Separation Optical System		3MOS		Pan-Tilt Mechanism	Pan/Tilt Operation Speed		MAX 60°/s			
Minimum Illumination		7 lx (50 IRE, F1.6, +18 dB)			Panning Range		±175°			
Horizontal Resolution		1 000 TV lines Typ (Center area)			Tilting Range		-30° to 210°			
Gain Selection		Auto, 0 dB to 18 dB			Quietness		NC35			
Frame Mix ^{*1}		0 dB, 6 dB, 12 dB, 18 dB, 24 dB		Standard Accessories		Mount bracket for installation surface (Hanging ^{*4} / Desktop) Drop-prevention wire, Drop-prevention wire mounting screw (already attached to the unit), Bracket mounting screws (bind-head) M4 × 10 mm, Main unit mounting screw (with flat washer, spring washer) M3 × 6 mm, Cable cover, Power cable (1.8 m [5.9 ft]), AC adaptor				
Electronic Shutter Speed	59.94 Hz	1/100, 1/250, 1/500, 1/1000, 1/2000, 1/4000, 1/10000								
	50 Hz	1/120, 1/250, 1/500, 1/1000, 1/2000, 1/4000, 1/10000								
SynchroScan	59.94 Hz	60.17 Hz to 644.26 Hz								
	50 Hz	50.19 Hz to 537.13 Hz								
Gamma		Off, Normal (Low, Mid, High), Cinema								
White Balance		AWB A, AWB B, ATW, 3 200K, 5 600K								

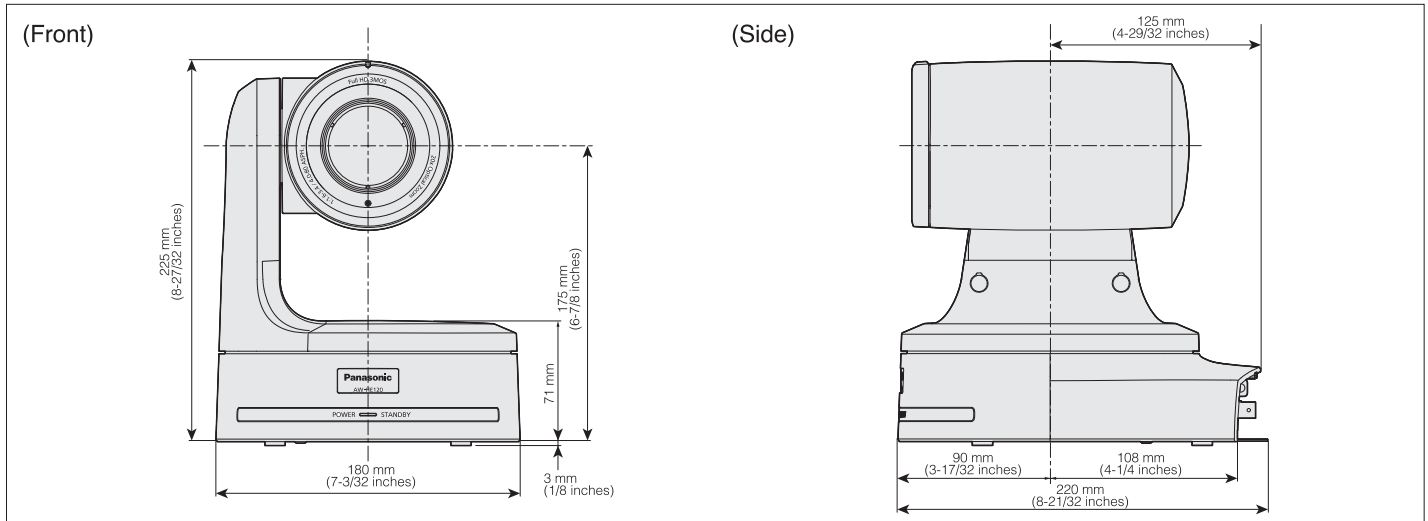
*1 Cannot be set when using 1080/59.94i nor 1080/50i formats.

*2 When 1080/59.94p, 1080/50p, 480/59.94p or 576/50p mode is selected, a Progressive signal is output to HDMI and an Interlace signal is output to SDI and analog component outputs.

*3 Supports BBS (Black Burst Sync) and Tri-level Sync. BBS does not allow locking of the color subcarrier.

*4 To ensure more safety, AW-HE120WP/WE/KP/KE can be secured by using the direct ceiling mount bracket (WV-Q105).

Dimensions



Rear view

